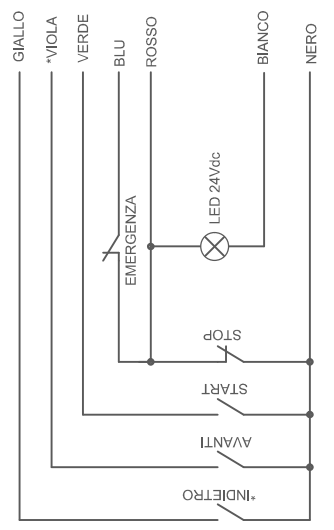
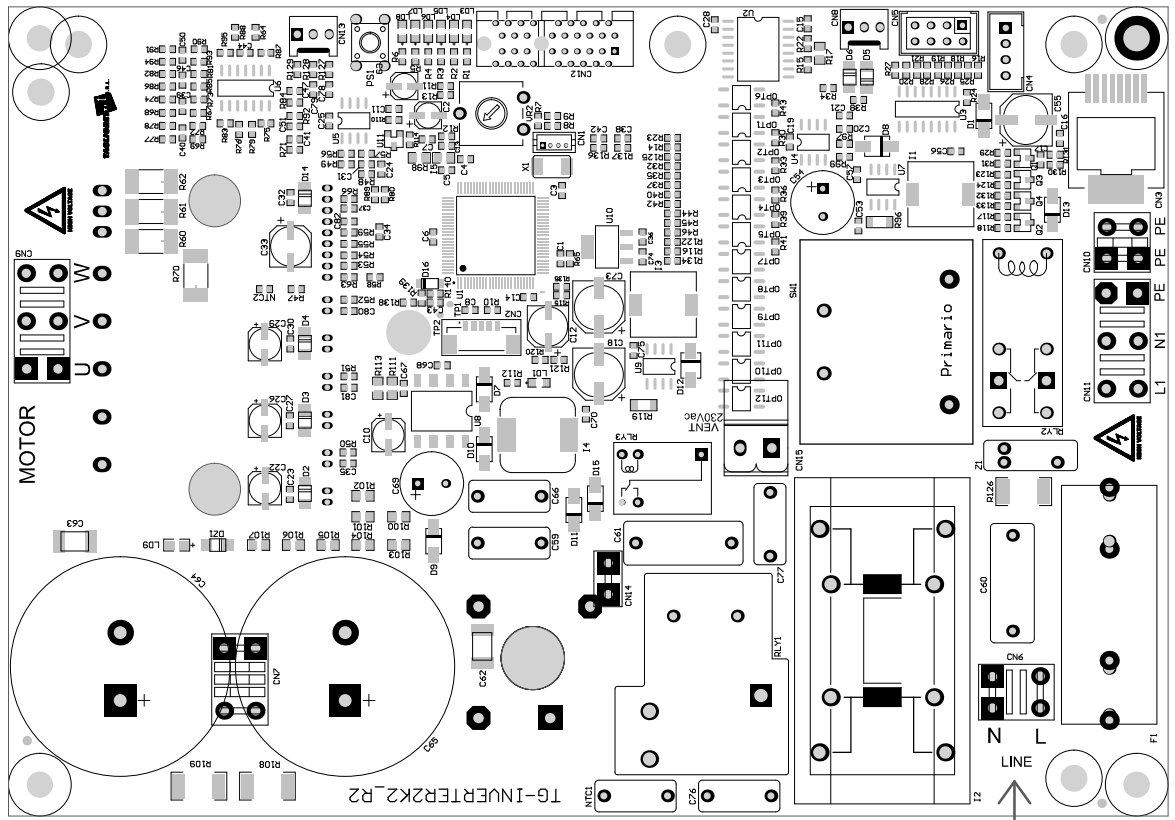
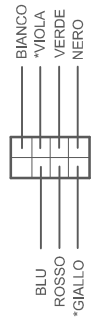


# COLLEGAMENTI TG-INVERTER2K2

MOTORE 230Vac  
3 FASI

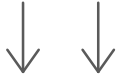


\*OPTIONAL



REGOLAZIONE VELOCITA' 10K

COMANDI PULSANTE



RETE 230Vac



MOTORE AUSILIARIO  
NON REGOLATO 230Vac



PANNELLO  
COMANDI/CONFIG.  
TG-COM-PC02

